

G10/254 Northbourne Avenue, Dickson, ACT, 2602



Unit For Sale

Thursday, 17 October 2024

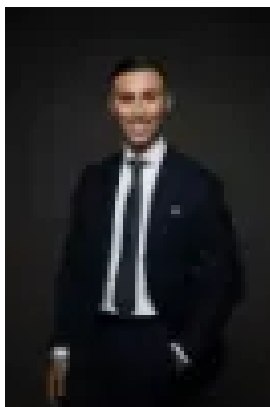
G10/254 Northbourne Avenue, Dickson, ACT, 2602

Bedrooms: 2

Bathrooms: 2

Parkings: 1

Type: Unit



Tom Wiggins

Townhouse Living Offering Unmatched Convenience

What you see:

A ground-floor residence with a generous floor plan, offering a convenient lock-up-and-leave lifestyle, perfect for that Inner North lifestyle.

What we see:

Downsize the maintenance, not the lifestyle.

See more:

Situated in the award-winning Mulberry complex

Positioned on the corner with one adjoining neighbour

Unique townhouse design with a private courtyard

Gourmet kitchen featuring 40mm stone benchtop, gas cooktop, oven and integrated dishwasher

Large master bedroom includes built-in robes and ensuite

Additional bedroom includes built-in robe and direct access to bathroom

Bathrooms feature floor-to-ceiling tiles and wall-mounted vanities

European laundry with washer-dryer combination

Ground floor powder room

Timber flooring and carpet throughout

Double-glazed windows and sliding doors

Quality window furnishing throughout

Reverse-cycle heating and cooling

Video intercom access

One secure allocated car park and storage cage

Interior designed by Darren Palmer

Designed by Cox Architect

Built by Core Developments

Developed by award-winning Art Group

HIA award-winning Apartment Complex of the Year 2022

HIA award-winning Outdoor Project of the Year 2022

Rooftop amenities include heated pool, BBQ dining area, cabana seating, vegetable garden and Zen garden

Within a 1 minute walk to the Light Rail Stop

Within a 10 minute walk to Dickson CBD

Within a 12 minute walk to Daramalan College

Within a 20 minute walk to Braddon Dining Precinct

Within a 5 minute drive to the Ainslie Shops

Within a 5 minute drive to the Canberra City

Within a 6 minute drive to Dickson College

Total house size: 112m²

Living: 93m²

Courtyard: 15m²

Planter box: 4m²

Built: 2022

EER: 6.0

Rates: \$1,888 p.a

Land tax: \$2,342 p.a

Body corporate: \$3,715 p.a

Rental appraisal: \$650 - \$700 p.w

Disclaimer: Please note the property will not be marked under offer and inspections will not cease until the exchange of contracts has taken place. The above figures are approximate only. The material and information contained within this marketing is for general information purposes only. HIVE Property does not accept responsibility and disclaim all liabilities regarding any errors or inaccuracies contained herein. You should not rely upon this material as a basis for making any formal decisions. We recommend all interested parties to make further enquiries.