

1/28 Jubilee Road, Wallsend, NSW 2287

CRAWFORD

Sold Villa

Thursday, 16 November 2023

1/28 Jubilee Road, Wallsend, NSW 2287

Bedrooms: 2

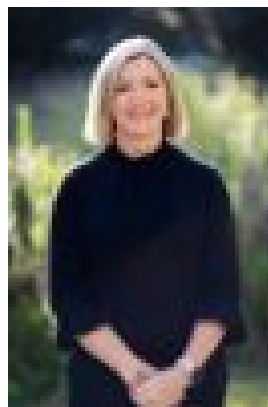
Bathrooms: 2

Parkings: 1

Type: Villa



Phillip Swan
0478845591



Amanda Swan
0457809434

\$630,000

Thoughtfully designed with a strong focus on easy-care interiors and neutral colour tones, this modern villa provides an ideal opportunity for those downsizing. The open plan living and dining room adjoins the contemporary kitchen boasting modern appliances including Miele Dishwasher, 4 burner gas stove top and plenty of bench and cupboard space. Offering 2 good sized bedrooms with the master hosting its own ensuite and walk in robe and the second bedroom with its own sizable built-in wardrobe you will want for nothing more. The single automatic garage with internal access and additional storage space, will provide you with ease of living, whilst the covered outdoor area with an eclipse sunroof is the ideal spot to enjoy your morning cup of coffee. Features include:-
- Ducted Airconditioning throughout to keep you cool in the summer months and toasty warm in the winter.
- Eclipse Sunroof to the private outdoor rear courtyard.
- Low maintenance and easy to maintain front and rear yards. Situated at the front of a complex of 8 very neat and tidy, well maintained units, you will definitely have a sense of community. This property is ideally located with bus stops situated in close proximity for an effortless commute into town or the local shops. Council Rates - \$1571 approx pa Water Rates - \$771 approx pa Strata Levies - \$2888 approx pa Phone Phillip Swan on 0478 845 591 to arrange your inspection. Disclaimer: We have obtained all information provided here from sources we believe to be reliable; however, we cannot guarantee its accuracy. Prospective purchasers are advised to carry out their own investigations and satisfy themselves of all aspects of such information including and without limitation, any income, rentals, dimensions, areas, zoning, inclusions & exclusions.