

# Wingeel Road, Shelford, Vic 3329



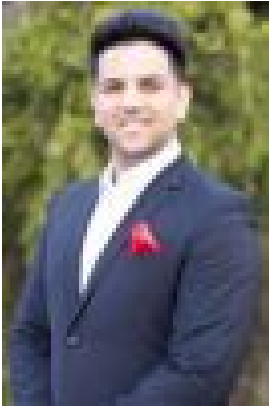
## Mixed Farming For Sale

Friday, 10 May 2024

Wingeel Road, Shelford, Vic 3329

Area: 23 m2

Type: Mixed Farming



Karan Sharma



Veenu Pathak  
0433823270

## Contact Agent

KEY Reality proudly presents approx. 58 acres in Shelford, VIC 3329, to individuals looking for a rural getaway, land banking, livestock farming, growing crops, production of vegetables, or lifestyle living. This remarkable piece of land is a fantastic option. Property feature: 2 x Dams and one bore with a solar pump. A concrete-floored shed is on the property. It is centrally located near Bannockburn, Geelong, and Ballarat. 35-minute drive to Geelong, VIC 45-minute drive to Ballarat, VIC. Please get in touch with us to organise a private inspection. Karan Sharma: 0432 500 718 Veenu Pathak: 0433 823 270

DISCLAIMER: All stated dimensions, photos and information are approximate only and only for reference purposes. Particulars given are for general information only and do not constitute any representation on the part of the vendor or agent. Please see the below link for an up-to-date copy of the Due Diligence Check List:

<http://www.consumer.vic.gov.au/duediligencechecklist>