

# X-X Gurner Avenue, Austral, NSW 2179

## Residential Land For Sale

Friday, 10 May 2024

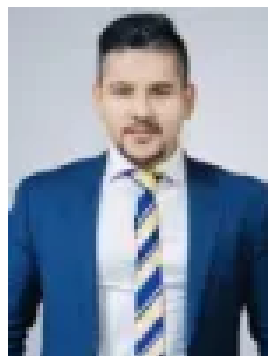
X-X Gurner Avenue, Austral, NSW 2179

Area: 300 m2

Type: Residential Land



Pritam Shrestha  
1800697277



Nava Pandey  
1800697277

**\$899,000**

Discover exclusive home and land packages in the rapidly expanding suburb of Austral. Positioned to become the premier growth hub in the near future, Austral boasts unparalleled potential, particularly with its proximity to the forthcoming international airport in 2026. Seize this opportunity to venture into the Austral market, where prices remain competitive. Our diverse range of home and land packages caters to your specific requirements, with prices starting from \$899,000 offering varying land sizes and both single and double-story designs. Our team of experts can tailor a solution to align with your budget and preferences, ensuring you secure the optimal deal in the competitive market. Choose your preferred façade, as the options are yours to customize. A premium estate creating opportunities for a new and exciting way of life. Breathe in the fresh air at Austral's best location. Located in the beautiful and tranquil surrounds of Sydney's South West it offers the best of both worlds, a relaxed rural lifestyle combined with an urban convenience. Arrahman College: Approx. 2 minutes' drive AI-Faisal College: Approx. 5 minutes'

drive Austral Town Centre (IGA, Servo, Restaurants): Approx. 2 minutes' drive Austral Public School: Approx. 4 minutes' drive Leppington train Station: Approx. 8 minutes' drive Carnes Hill Marketplace: Approx. 9 minutes' drive Western Sydney International Airport: Approx. 18 minutes'

drive Registration is expected by Late-2024, assuring strong capital growth. • If you want to be part of a small boutique, upmarket housing estate look no further. Contact PRITAM SHRESTHA 0420 411 230 TODAY! \*All information in this advertisement was gathered from sources deemed reliable, however Sapphire Estate Agents Leppington or any staff related to the advertised property cannot guarantee the accuracy of this information and nor do we accept responsibility for its accuracy. Intending purchasers must make and rely upon their own enquiries. Sapphire Estate Agents Leppington on behalf of the Developer reserves the right to amend prices or withdraw any land from sale without notice.